



SOUTH AUSTRALIAN ECONOMIC INDICATORS

EMBARGO: 11:30AM (CANBERRA TIME) FRI 1 DEC 2000

C O N T E N T S

	<i>page</i>
Notes	2
REVIEW	
South Australian overview	3
Selected features	4
TABLES	
List of tables	5
Statistical summary	6
State summary	8
State accounts	9
International trade	10
Consumption and investment	14
Production	16
Consumer price index	20
Labour force and demography	21
Average weekly earnings	24
Financial markets	25
ADDITIONAL INFORMATION	
Publications source index	26

- For further information about these and related statistics, contact Rachel Smith on Adelaide 08 8237 7395, or the National Information Service on 1300 135 070.

NOTES

FORTHCOMING ISSUES

<i>ISSUE</i>	<i>RELEASE DATE</i>
January 2001	22 December 2000
February 2001	1 February 2001
March 2001	1 March 2001
April 2001	2 April 2001
May 2001	1 May 2001
June 2001	1 June 2001

CHANGES IN THIS ISSUE

Due to the suspension of trend series data for retail turnover, tables 1, 2 and 9 now show seasonally adjusted data. For more information see *Retail Trade Australia, September* (Cat. no. 8501.0).

Table 17 now shows the 14th Series CPI which commenced in the September quarter 2000. For more information see *Consumer Price Index, Australia* (Cat. no. 6401.0).

DATA NOTE

ABS statistical series are being impacted to varying degrees as a result of The New Tax System, introduced in Australia from 1 July 2000. The New Tax System includes the removal of Wholesale Sales Tax and the introduction of a Goods and Service Tax (GST), and as a result, a number of ABS data series will reflect significant immediate and subsequent impacts. In future issues, implications of The New Tax System on series will be footnoted at the bottom of tables. For more information please see the Notes section in relevant publications.

SYMBOLS AND OTHER USAGES

n.a.	not available
n.y.a.	not yet available
*	subject to sampling variability too high for most practical purposes
..	not applicable
0, 0.0	nil, or rounded to zero

ROUNDING

Where figures have been rounded, discrepancies may occur between sums of the component items and totals.

INFORMATION

All data are original, unless otherwise stated. More detailed information on each series, including explanatory and technical notes, can be obtained from other Australian Bureau of Statistics publications or alternative data sources. To assist those seeking further information, the series presented in the statistical and state summaries provides a reference to the Publication Source Index which is at the end of this publication.

I. Crettenden
Regional Director
South Australia

OVERVIEW

Data in the tables are generally expressed in original terms, while the data in this Overview are presented in trend terms, unless otherwise stated.

INTERNATIONAL TRADE

The value of merchandise exports in original terms for the month of September was a record \$756.1m. This is an increase of 17.6% over the value for August and an increase of 35.9% over September 1999. Exports of wine, seafood, metals and motor vehicles recorded strong results. The value of merchandise imports released from Customs control in original terms for South Australia was \$427.7m in September. This is a decrease of 8.3% over the value for August and an increase of 33.5% on September 1999.

CONSUMPTION AND INVESTMENT

The seasonally adjusted estimate of retail turnover fell slightly (0.2%) in August 2000 to \$925.0m. Nationally the figure rose by 0.8%. The industry group which recorded the greatest increase was Clothing and soft good retailing (10.0%) while Recreational good retailing had the largest decrease (4.2%).

New motor vehicle registrations rose 4.1% in September. Passenger vehicle registrations rose (4.8%) and Other vehicle registrations rose slightly (0.3%). Over the 12 months to September new registrations have increased 12.4%. In original terms there were 4,118 new motor vehicle registrations for the month.

In the June quarter, private new capital expenditure increased by 4.5% to \$650.0m and was 18.4% higher than the June quarter 1999. In original terms private new capital expenditure for the quarter was \$696.0m.

HOUSING

The estimate for total dwellings approved fell by 11.7% in September 2000 and by 32.4% over the September quarter. This series is at its lowest level since it began in 1983 and is now 57.6% below the peak of January 2000. The trend for private sector houses has declined for eight consecutive months with a fall of 30.5% during the September 2000 quarter.

CONSUMER PRICE INDEX

The Consumer Price Index (all groups) in Adelaide increased by 3.7% to 132.3 in the September quarter of 2000, and by 5.8% over the level recorded twelve months previously. The main contributors to the recent quarterly growth were Clothing & Footwear (up 9.2%), Communication (up 6.9%), and Alcohol & Tobacco (up 6.0%).

LABOUR FORCE AND DEMOGRAPHY

The number of employed persons in South Australia for October (682,100) is 2.0% higher than the level of twelve months ago (669,000).

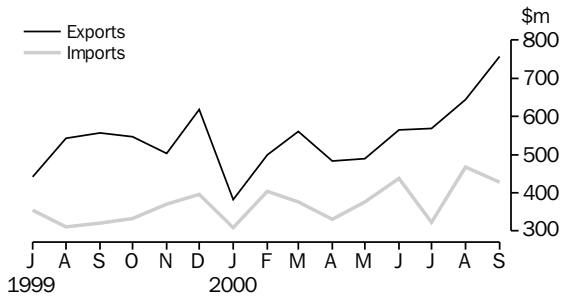
The unemployment rate for South Australia was 7.2% (53,300 persons) in October, lower than the 8.2% (60,000 persons) recorded in October 1999.

FINANCIAL MARKETS

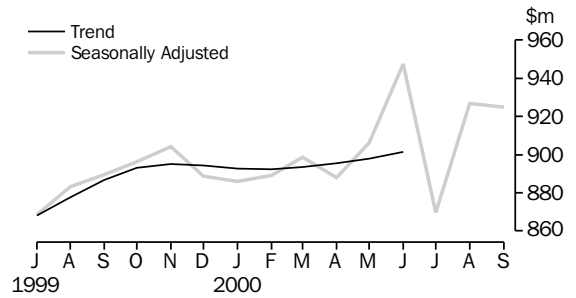
The value of secured housing finance commitments (excluding alterations and additions) has continued to steadily increase for the fourth consecutive month reaching \$368.0m in September, up 1.9% for the month and marginally higher than a year ago.

SELECTED FEATURES

MERCHANDISE EXPORTS AND IMPORTS

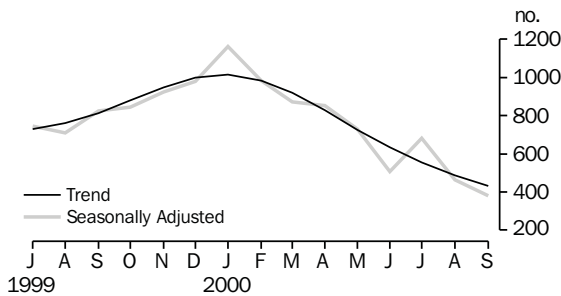


RETAIL TURNOVER(a)

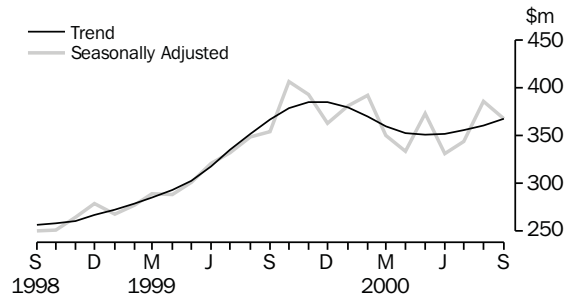


(a) Retail turnover trend series has been suspended. For more information see Data note on page 2.

DWELLING UNITS APPROVED

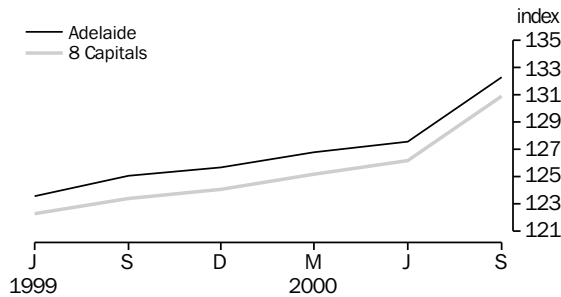


SECURED HOUSING FINANCE COMMITMENTS (a)

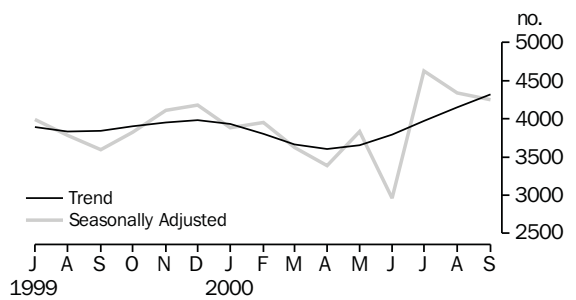


(a) Excludes alterations and additions. Includes refinancing.

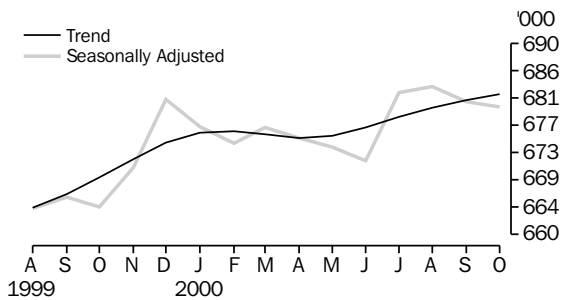
CONSUMER PRICE INDEX



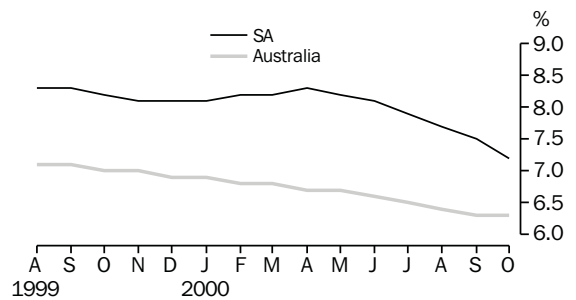
MOTOR VEHICLE REGISTRATIONS



EMPLOYED PERSONS



UNEMPLOYMENT RATE, TREND



LIST OF TABLES

			Page
STATISTICAL SUMMARY	1	Statistical summary	6
	2	State summary	8
STATE ACCOUNTS	3	State accounts at current prices	9
	4	State accounts at chain volume measures	9
INTERNATIONAL TRADE	5	Merchandise exports, by selected commodity group	10
	6	Merchandise exports, by selected countries and country groups	11
	7	Merchandise exports, by industry of origin	12
	8	Merchandise imports, by selected commodity group	13
CONSUMPTION AND INVESTMENT	9	Turnover of retail establishments, by industry—trend	14
	10	New motor vehicle registrations, by type of vehicle	14
	11	Actual private new capital expenditure, by selected industry and type of asset	15
	12	Tourist accommodation	15
PRODUCTION	13	Building approvals	16
	14	Building commencements	17
	15	Value of building work done and completed during period	18
	16	Production, livestock products and selected commodities	19
CONSUMER PRICE INDEX	17	Consumer price index, by group—Adelaide	20
LABOUR FORCE AND DEMOGRAPHY	18	Estimated resident population and components of population change	21
	19	Births, deaths, marriages and divorces	21
	20	Civilian labour force status	22
	21	Civilian labour force, unemployment and participation rates	23
AVERAGE WEEKLY EARNINGS	22	Average weekly earnings of employees	24
FINANCIAL MARKETS	23	Secured housing finance commitments	25
	24	Finance commitments	25

Indicator	Period	South Australia			Australia			SA as a % of Aust.	Source index
		Number	% change from		Number	% change from			
			Previous period	Same period previous year		Previous period	Same period previous year		
State accounts									
Domestic final demand									
Current prices trend (\$m)	Jun qtr 00	11 152	1.6	7.9	164 742	1.6	6.7	6.8	(1)
Chain volume measures trend (\$m)	Jun qtr 00	10 910	1.0	5.9	162 223	1.0	5.3	6.7	(1)
Private final consumption expenditure									
Current prices trend (\$m)	Jun qtr 00	6 751	1.1	5.7	95 007	1.2	5.2	7.1	(1)
Chain volume measures trend (\$m)	Jun qtr 00	6 643	0.7	4.4	93 580	0.8	3.9	7.1	(1)
Private gross fixed capital formation									
Current prices trend (\$m)	Jun qtr 00	1 853	2.3	15.0	31 990	2.1	7.8	5.8	(1)
Chain volume measures trend (\$m)	Jun qtr 00	1 810	2.9	11.8	31 906	1.8	7.4	5.7	(1)
Compensation of employees									
Current prices trend (\$m)	Jun qtr 00	5 073	1.3	3.7	10 246	0.8	3.2	49.5	(1)
International accounts									
Exports (\$m)	Sep 00	756.1	17.6	35.9	9 371.2	4.9	33.1	8.1	(2)
Imports (\$m)	Sep 00	427.7	-8.3	33.5	9 885.1	-8.0	10.3	4.3	(2)
Consumption and investment									
Retail turnover									
Current prices original (\$m)	Sep 00	900.3	0.5	4.0	12 516.4	1.7	4.8	7.2	(3)
Current prices seasonally adjusted (\$m)	Sep 00	925.0	-0.2	4.0	12 763.0	0.8	4.7	7.2	(3)
Chain volume measures original(\$m)	Sep qtr 00	2 525.1	-2.2	-1.1	34 796.7	-1.7	-1.1	7.3	(3)
New motor vehicle registrations									
Original (no.)	Sep 00	4 118	-9.3	12.8	63 958	-16.3	8.0	6.4	(4)
Trend (no.)	Sep 00	4 320	4.1	12.4	71 715	3.7	17.5	6.0	(4)
Private new capital expenditure									
Current prices original (\$m)	Jun qtr 00	696	15.4	38.1	11 341	16.8	6.7	6.1	(5)
Current prices trend (\$m)	Jun qtr 00	650	4.5	18.4	10 495	0.7	-2.2	6.2	(5)
Private new capital expenditure (\$m)	1999-00	2 455	7.8	7.8	42 427	-5.0	-5.0	5.8	(5)
Takings, licensed hotels, motels, guest houses and apartments with facilities (\$m)	Jun qtr 00	49.3	-1.4	11.0	1 039.5	-4.5	9.8	4.7	(6)
Production									
Dwelling unit approvals									
Original (no.)	Sep 00	409	-21.6	-54.9	8 926	-9.4	-41.4	4.6	(7)
Trend (no.)	Sep 00	430	-11.7	-47.1	8 487	-7.2	-42.8	5.1	(7)
Dwelling units commenced (no.)	Jun qtr 00	2 448	-3.8	34.1	41 795	-4.8	13.3	5.9	(8a)
Value of non-residential building approvals (\$m)	Sep 00	29.4	-67.2	-40.2	995.4	0.9	15.2	3.0	(7)
Value of total building activity									
Commenced (\$m)	Jun qtr 00	462.5	-11.0	34.4	9 380.6	-0.2	22.6	4.9	(8)
Work done (\$m)	Jun qtr 00	519.2	19.3	50.0	11 187.2	20.1	26.7	4.6	(8)
Work yet to be done (\$m)	Jun qtr 00	495.1	-6.7	9.6	11 841.3	-9.3	-3.2	4.2	(8)
Value of engineering construction work done (\$m)	Jun qtr 00	347.5	-0.3	22.0	5 213.2	9.2	-2.0	6.7	(9)
Manufacturing production									
Red meat (tonnes)	Sep qtr 00	50 206	-7.5	20.4	784 646	1.5	65.3	6.4	(11)
Mineral exploration expenditure (other than for petroleum) (\$m)	Jun qtr 00	12.8	68.4	6.7	195.0	16.6	-25.7	6.6	(12)

Indicator	Period	South Australia			Australia			SA as a % of Aust.	Source index
		Number	% change from		Number	% change from			
			Previous period	Same period previous year		Previous period	Same period previous year		
Prices(a)									
CPI—All groups (index no.)	Sep qtr 00	132.3	3.7	5.8	130.9	3.7	6.1	..	(13)
Price index of materials used in house building (index no.)	Sep qtr 00	129.8	0.1	3.4	124.5	-0.8	3.3	..	(14)
Price index of materials used in building other than houses (index no.)	Sep qtr 00	116.0	-1.4	0.7	115.5	-1.6	0.3	..	(15)
Price index of established houses (index no.)	Jun qtr 00	126.9	2.7	8.9	147.3	2.4	9.7	..	(16)
Price index of project homes (index no.)	Jun qtr 00	130.4	0.3	8.8	122.9	0.4	7.1	..	(16)
Labour force and demography									
Population (resident at end qtr) ('000)	Mar qtr 00	1 496.1	0.1	0.3	19 104.6	0.3	1.1	7.8	(17)
Short-term overseas visitor arrivals (no.)	Jun 00	9 137	39.3	35.4	347 943	9.0	9.7	2.6	(21)
Short-term resident departures (no.)	Jun 00	14 484	-10.3	17.1	303 760	6.6	5.0	4.8	(21)
Labour force									
Original ('000)	Oct 00	732.9	-1.0	0.7	9 710.5	-1.2	1.9	7.5	(18)
Trend ('000)	Oct 00	735.4	-0.1	0.9	9 741.8	0.0	2.2	7.5	(18)
Employed persons									
Original ('000)	Oct 00	681.4	-0.4	2.4	9 125.1	-0.7	2.7	7.5	(18)
Trend ('000)	Oct 00	682.1	0.1	2.0	9 131.3	0.1	3.1	7.5	(18)
Participation rate									
Original(b) (%)	Oct 00	60.7	-0.4	0.0	63.6	-0.8	0.3	..	(18)
Trend(b) (%)	Oct 00	60.9	-0.1	0.2	63.8	0.0	0.5	..	(18)
Unemployment rate									
Original(b) (%)	Oct 00	7.0	-0.6	-1.2	6.0	-0.4	-0.7	..	(18)
Trend(b) (%)	Oct 00	7.2	-0.3	-1.0	6.3	0.0	-0.7	..	(18)
Job vacancies ('000)	Aug 00	5.3	6.0	8.2	127.7	19.5	16.1	4.2	(19)
Industrial disputes ('000 working days lost)	Aug 00	0.1	0.0	-98.6	32.9	50.2	-74.7	0.3	(20)
Income									
Average weekly earnings (full-time adults; ordinary time)									
Original (\$)	Aug 00	745.50	2.6	6.2	798.10	2.0	6.2	..	(22)
Trend (\$)	Aug 00	743.50	1.7	5.9	796.60	1.5	5.5	..	(22)
Wage cost index (total hourly rate excluding bonuses)(c) (index no.)	Jun 00	108.1	0.7	3.2	108.4	0.6	2.8	..	(23)
Financial markets									
Secured housing finance(d) (\$m)	Sep 00	343.0	-9.0	-1.7	5 149.0	-14.4	-18.8	6.7	(24)
Finance commitments									
Personal (\$m)	Sep 00	231.3	-22.2	-13.3	3 582.9	-23.0	-16.5	6.5	(25)
Commercial (\$m)	Sep 00	503.6	22.5	6.6	14 830.5	-12.1	28.6	3.4	(25)
Lease (\$m)	Sep 00	15.8	56.4	-20.2	457.3	-2.8	-41.7	3.5	(25)
Interest rates(b)									
Banks new housing loans (%)	Sep 00	8.05	0.00	1.50	..	(26)
Bank loans—small, medium business(e) (%)	Sep 00	9.20	0.05	1.75	..	(26)
Bank loans—large business (%)	Sep 00	9.65	0.05	1.70	..	(26)

(a) Base year of each index 1989-90=100.

(b) Change is shown in terms of percentage points.

(c) Base year of index Sep 1997=100.

(d) Excludes alterations and additions. Includes refinancing.

(e) Rate for business loans over \$50,000.

2

STATE SUMMARY

<i>Indicator</i>	<i>Period</i>	<i>NSW</i>	<i>Vic.</i>	<i>Qld</i>	SA	<i>WA</i>	<i>Tas.</i>	<i>NT</i>	<i>ACT</i>	<i>Source index</i>
SELECTED INDICATORS										
CPI—All groups(a) (index no.)	Sep qtr 00	131.6	130.4	131.3	132.3	128.6	131.3	130.0	130.7	(13)
Participation rate trend (%)	Oct 00	62.5	64.0	65.0	60.9	66.4	59.4	69.2	73.5	(18)
Unemployment rate trend (%)	Oct 00	5.4	6.2	7.5	7.2	6.0	9.5	5.2	4.3	(18)
Average weekly earnings (full-time adults; ordinary time) trend (\$)	Aug 00	834.70	782.40	747.10	743.50	812.60	745.30	805.10	916.80	(22)

SELECTED INDICATORS PER HEAD OF POPULATION(b)

State final demand										
Chain volume measures trend (\$'000)	Jun qtr 00	8.7	8.5	8.2	7.3	8.3	6.9	10.3	15.9	(1)
Retail turnover										
Current prices original (\$)	Sep 00	696.4	599.0	663.6	601.8	676.3	563.3	719.9	795.9	(3)
Current prices seasonally adjusted (\$)	Sep 00	712.0	613.1	663.7	618.3	697.9	589.0	697.3	814.2	(3)
New motor vehicle registrations trend (no. per '000 population)	Sep 00	3.8	4.0	3.9	2.9	3.7	2.7	3.5	3.7	(4)
Private new capital expenditure										
Current prices trend (\$)	Jun qtr 00	598.8	565.6	528.3	434.6	660.7	266.0	643.3	340.6	(5)
Dwelling unit approvals										
Original (no. per '000 population)	Sep 00	0.424	0.578	0.623	0.349	0.688	0.176	0.483	0.546	(7)
Trend (no. per '000 population)	Sep 00	0.386	0.574	0.518	0.326	0.674	0.215	0.489	0.437	(7)
Secured housing finance(c) (\$)	Sep 00	323.6	243.2	214.7	229.3	322.8	148.8	185.1	289.3	(24)

PERCENTAGE CHANGE FROM PREVIOUS PERIOD

State final demand										
Chain volume measures trend (%)	Jun qtr 00	0.9	1.1	1.0	1.0	-0.1	1.5	-1.3	2.1	(1)
Retail turnover										
Current prices original (%)	Sep 00	4.7	-0.2	-0.3	0.5	1.3	1.3	-5.8	1.2	(3)
Current prices seasonally adjusted (%)	Sep 00	3.2	-1.4	-0.9	-0.2	1.3	2.1	-0.6	0.0	(3)
New motor vehicle registrations trend (%)	Sep 00	3.6	4.2	2.9	4.1	4.9	3.5	2.6	3.0	(4)
Private new capital expenditure										
Current prices trend (%)	Jun qtr 00	2.7	-1.6	-0.8	4.5	-0.8	10.6	-18.8	6.0	(5)
Dwelling unit approvals										
Original (%)	Sep 00	-6.1	-10.5	-10.2	-21.6	-6.5	26.5	-34.0	-22.9	(7)
Trend (%)	Sep 00	-6.7	-9.3	-8.3	-11.8	-3.7	-13.1	-3.9	0.2	(7)
CPI—All groups (%)	Sep qtr 00	3.6	3.8	3.9	3.7	3.7	3.8	3.4	3.8	(13)
Participation rate trend(d) (%)	Oct 00	-0.1	0.1	-0.1	-0.1	0.0	0.0	0.6	0.1	(18)
Unemployment rate trend(d) (%)	Oct 00	-0.1	0.0	0.0	-0.3	-0.1	0.0	-0.1	-0.1	(18)
Average weekly earnings (full-time adults; ordinary time) trend (%)	Aug 00	1.2	1.7	2.2	1.7	1.4	1.4	1.1	0.8	(22)
Secured housing finance (%)	Sep 00	-14.2	-15.7	-15.5	-9.0	-13.7	-15.7	-21.7	-12.6	(24)

(a) Base year of index 1989-90 = 100.

(b) The latest quarterly estimate of Australian resident population has been used to calculate ratios for subsequent periods.

(c) Excludes alterations and additions. Includes refinancing.

(d) Change is shown in terms of percentage points.

3

STATE ACCOUNTS AT CURRENT PRICES

Period	Final consumption expenditure		Gross fixed capital formation		State final demand	Gross State product	Compensation of employees
	Households	General government	Private	Public			
ANNUAL (\$m)							
1997-98	24 390	7 907	6 705	1 310	40 312	39 652	18 905
1998-99	25 534	8 017	6 173	1 374	41 098	40 573	19 284
1999-00	26 503	8 360	(a)10 237	(a)-1 547	43 553	n.a.	19 963
QUARTERLY, TREND (\$m)							
1998-99							
March	6 346	2 012	1 499	339	10 196	n.a.	4 823
June	6 388	2 010	1 575	359	10 333	n.a.	4 894
1999-00							
September	6 477	2 011	1 668	379	10 534	n.a.	4 932
December	6 585	2 054	1 750	380	10 765	n.a.	4 961
March	6 678	2 120	1 812	369	10 978	n.a.	5 009
June	6 751	2 172	1 853	358	11 152	n.a.	5 073

(a) The negative figure for Public gross fixed capital formation and the positive figure for Private gross fixed capital formation is the result of the sale of the South Australian electrical transmission network in December quarter 1999. For more information see *National Income, Expenditure and Product, Australian National Accounts, June 2000* (Cat. no. 5206.0).

Source: *Australian National Accounts: Quarterly State Details* (Cat. no. 5206.0.40.001), and *Australian National Accounts: State Accounts* (Cat. no. 5220.0).

4

STATE ACCOUNTS AT CHAIN VOLUME MEASURES(a)

Period	Final consumption expenditure		Gross fixed capital formation		State final demand	Gross State product
	Households	General government	Private	Public		
ANNUAL (\$m)						
1997-98	24 390	7 907	6 714	1 309	40 320	39 652
1998-99	25 200	7 841	6 066	1 386	40 493	40 493
1999-00	26 218	8 224	(b)10013	(b)-1456	42 999	n.a.
QUARTERLY, TREND (\$m)						
1998-99						
March	6 341	2 000	1 506	341	10 188	n.a.
June	6 365	1 995	1 574	364	10 298	n.a.
1999-00						
September	6 434	1 999	1 641	387	10 461	n.a.
December	6 524	2 033	1 701	387	10 642	n.a.
March	6 596	2 075	1 759	371	10 801	n.a.
June	6 643	2 098	1 810	355	10 910	n.a.

(a) Reference year for chain volume measures is 1996-97.

(b) The negative figure for Public gross fixed capital formation and the positive figure for Private gross fixed capital formation is the result of the sale of the South Australian electrical transmission network in December quarter 1999. For more information see *National Income, Expenditure and Product, Australian National Accounts, June 2000* (Cat. no. 5206.0).

Source: *Australian National Accounts: Quarterly State Details* (Cat. no. 5206.0.40.001), and *Australian National Accounts: State Accounts* (Cat. no. 5220.0).

5

MERCHANDISE EXPORTS, BY SELECTED COMMODITY GROUP(a)

<i>Period</i>	<i>Meat and meat preparations</i>	<i>Wheat</i>	<i>Wine</i>	<i>Wool and sheepskins (excl. wool tops)</i>	<i>Machinery</i>	<i>Metals and metal manufactures</i>	<i>Fish and crustaceans</i>	<i>Road vehicles, parts and accessories</i>	<i>Petroleum and petroleum products</i>	<i>Total</i>
	\$'000	\$'000	\$'000	\$'000	\$'000	\$'000	\$'000	\$'000	\$'000	\$'000
1997-98	218 252	446 839	564 093	287 824	401 749	574 407	236 353	479 396	237 824	4 986 705
1998-99	198 541	567 812	693 733	212 226	384 702	543 675	252 592	651 949	154 425	5 332 300
1999-00	160 483	473 086	899 348	179 716	353 224	805 744	394 375	883 895	218 466	6 188 354
1998-99										
April	12 617	34 910	56 286	10 319	41 314	39 915	20 369	26 728	4 080	382 320
May	16 087	37 891	69 509	20 656	34 714	57 271	20 328	28 067	19 003	461 901
June	13 274	44 468	77 522	13 202	29 477	50 927	17 824	90 638	14 832	478 816
1999-00										
July	11 764	27 968	60 499	10 288	29 602	53 204	30 310	41 016	16 088	441 950
August	7 777	34 802	81 661	12 680	27 056	61 903	81 050	97 193	2 428	543 384
September	10 284	52 367	100 662	15 114	37 219	57 003	57 030	59 781	17 842	556 471
October	12 408	50 939	96 166	16 327	29 940	69 728	28 318	65 627	28 792	546 911
November	13 487	7 829	54 034	16 631	31 130	70 076	26 161	141 478	3 439	502 798
December	12 091	73 023	50 412	13 568	26 925	71 545	21 104	179 287	19 102	618 005
January	11 676	42 774	46 507	9 949	20 727	49 340	24 759	24 514	17 151	381 964
February	15 413	42 027	61 522	14 350	26 925	77 412	19 371	44 842	26 572	499 394
March	16 203	37 670	81 909	15 355	31 158	75 803	21 515	80 430	26 155	560 304
April	15 688	48 190	81 644	13 701	26 261	69 225	28 678	21 432	27 316	484 175
May	16 988	31 684	93 800	20 262	33 529	69 203	27 111	64 965	3 473	488 846
June	16 704	23 814	90 533	21 491	32 751	81 301	28 968	63 329	30 107	564 152
2000-01										
July	17 193	19 207	91 490	18 494	31 670	66 891	36 425	113 176	28 523	568 370
August	12 891	34 504	91 514	13 501	32 235	54 120	117 598	119 950	12 106	643 099
September	21 035	66 366	110 662	16 615	28 853	95 631	65 886	137 712	48 077	756 128

(a) Restrictions are placed on the release of statistics for certain commodities for reasons of confidentiality. These restrictions do not affect total export and import figures, but they can affect some items within commodity, industry and country tables. See *International Trade* (Cat. no. 5422.0), Explanatory Notes, paragraph 30, for more details.

Source: Unpublished data, *International Merchandise Trade*.

6

MERCHANDISE EXPORTS, BY SELECTED COUNTRIES AND COUNTRY GROUPS

Period	European Union					South-East and North-East Asia				
	United States of America	Middle East	United Kingdom	Total European Union	New Zealand	Japan	China	Hong Kong	ASEAN	Total
	\$'000	\$'000	\$'000	\$'000	\$'000	\$'000	\$'000	\$'000	\$'000	\$'000
1997-98	632 203	389 766	424 251	849 932	354 698	612 475	331 489	239 652	491 573	2 023 385
1998-99	705 166	640 412	476 340	928 468	385 513	625 530	302 776	219 536	432 730	1 898 837
1999-00	954 681	724 871	625 154	1 073 928	446 026	787 295	315 199	255 679	492 407	2 298 016
1998-99										
April	45 095	34 532	36 364	73 442	29 851	33 779	17 751	15 279	41 873	133 758
May	50 172	41 235	44 124	95 851	31 605	73 576	29 447	16 125	35 990	189 921
June	98 299	38 031	49 708	80 488	47 036	54 060	22 775	13 782	47 319	159 292
1999-00										
July	54 593	31 570	39 127	80 383	39 266	72 253	16 859	15 394	27 998	162 944
August	87 288	50 910	58 622	101 012	46 379	104 035	18 156	13 326	36 480	202 395
September	57 055	41 511	73 174	112 056	44 181	94 402	31 426	22 587	43 853	214 621
October	46 383	80 029	78 330	117 681	49 572	62 459	32 529	25 385	40 020	203 079
November	102 334	82 481	33 828	67 501	40 223	36 313	31 053	22 591	46 641	169 668
December	147 939	130 984	36 575	76 383	37 356	40 148	14 457	27 195	40 711	171 092
January	40 261	53 129	30 102	63 379	22 005	37 506	20 084	29 260	25 167	142 744
February	55 875	71 510	42 617	73 030	44 832	48 221	41 265	20 241	38 646	206 501
March	131 298	24 442	53 267	87 039	37 877	65 469	43 237	26 342	41 680	215 769
April	68 381	66 629	58 962	99 714	19 524	63 008	21 328	20 398	39 863	187 566
May	101 180	30 245	64 293	101 411	23 024	53 701	19 306	14 037	49 568	173 869
June	62 092	61 433	56 258	94 338	41 788	109 779	25 500	18 924	61 779	247 770
2000-01										
July	100 237	65 100	55 675	85 106	34 844	84 815	24 427	23 112	51 225	215 551
August	128 982	59 474	66 643	101 139	32 625	157 425	22 847	12 564	44 969	261 674
September	97 443	108 682	85 356	134 425	38 367	140 032	22 830	24 624	66 747	289 322

Source: Unpublished data, International Merchandise Trade.

Period	Manufacturing								Total
	Agriculture, forestry and fishing(b)	Mining	Food, beverages and tobacco	Petroleum, coal, chemical associated product	Metal product	Machinery and equipment	Other manu- facturing	Other industries/ confidential	
	\$'000	\$'000	\$'000	\$'000	\$'000	\$'000	\$'000	\$'000	\$'000
1997-98	1 188 938	137 851	1 205 265	292 175	615 344	994 597	262 815	289 719	4 986 705
1998-99	1 352 378	73 125	1 282 013	285 053	581 372	1 172 362	264 973	321 024	5 332 300
1999-00	934 944	135 461	1 517 721	369 480	837 235	1 412 844	256 771	723 899	6 188 354
1998-99									
April	84 375	7 741	105 733	14 469	41 171	79 437	26 041	23 354	382 320
May	110 159	8 781	122 596	30 879	61 320	72 831	24 787	30 548	461 901
June	89 505	3 320	122 939	26 617	54 826	132 292	19 834	29 484	478 816
1999-00									
July	82 083	7 380	120 642	26 813	54 441	84 369	19 700	46 522	441 950
August	86 698	9 096	118 366	14 845	63 726	139 131	23 206	88 315	543 384
September	74 415	1 155	168 993	30 754	60 553	115 282	20 174	85 146	556 471
October	85 540	19 297	143 971	40 142	71 232	110 813	24 368	51 548	546 911
November	41 532	7 772	97 497	16 152	72 647	185 987	22 701	58 511	502 798
December	102 230	23 130	86 989	34 314	75 511	220 588	20 718	54 524	618 005
January	81 352	1 897	92 547	26 226	50 560	54 575	17 884	56 923	381 964
February	69 558	20 910	110 729	39 201	81 114	87 688	21 193	69 001	499 394
March	91 256	1 157	136 228	40 091	78 579	127 314	23 185	62 493	560 304
April	77 966	20 118	140 525	40 372	71 716	62 379	19 912	51 186	484 175
May	73 998	1 208	148 640	16 480	72 947	114 090	20 553	40 930	488 846
June	68 317	22 340	152 594	44 089	84 209	110 627	23 176	58 799	564 152
2000-01									
July	65 147	6 159	162 144	42 575	71 223	160 214	22 674	38 234	568 370
August	70 349	3 238	181 060	25 593	58 968	169 864	20 752	113 276	643 099
September	93 791	28 341	215 591	63 062	97 279	182 943	19 814	55 307	756 128

(a) Restrictions are placed on the release of statistics for certain commodities for reasons of confidentiality. These restrictions do not affect total export and import figures, but they can affect some items within commodity, industry and country tables. See *International Trade* (Cat. no. 5422.0), Explanatory Notes, paragraph 30, for more details.

(b) Bulk barley details are only included in this item for periods prior to September 1999. Due to confidentiality restrictions bulk barley data is included in 'Other industries/confidential' from September 1999 onwards.

Source: Unpublished data, *International Merchandise Trade*.

8

MERCHANDISE IMPORTS, BY SELECTED COMMODITY GROUP(a)

<i>Period</i>	<i>Food, beverages and tobacco</i>	<i>Petroleum and petroleum products</i>	<i>Chemicals</i>	<i>Textiles</i>	<i>Metals and metal manufactures</i>	<i>Machinery</i>	<i>Road vehicle parts and accessories</i>	<i>Other manufactured goods</i>	<i>Total</i>
	\$'000	\$'000	\$'000	\$'000	\$'000	\$'000	\$'000	\$'000	\$'000
1997-98	148 771	445 218	274 741	93 815	280 562	1 061 260	772 203	739 266	3 940 198
1998-99	162 784	271 492	281 097	96 052	264 732	917 879	812 096	765 643	3 716 152
1999-00	163 509	515 475	263 959	97 001	262 756	1 164 727	834 845	845 933	4 319 181
1998-99									
April	12 634	25 605	34 572	8 490	22 564	67 602	73 535	57 729	314 900
May	9 387	27 892	24 936	8 295	18 148	75 202	49 320	55 967	283 113
June	12 748	22 304	15 461	7 490	19 168	72 618	67 354	71 583	301 272
1999-00									
July	14 835	58 324	16 552	8 454	19 097	82 015	78 647	64 793	355 421
August	12 100	27 827	14 014	8 245	19 964	80 979	72 125	65 350	311 678
September	15 546	92	17 923	8 064	20 812	104 051	68 466	73 988	320 308
October	16 262	42 269	14 472	7 989	19 249	81 573	71 316	69 205	332 726
November	19 706	81 584	18 593	7 803	20 635	75 748	59 410	73 473	369 548
December	15 031	73 789	25 809	6 376	22 494	120 636	49 107	69 831	395 215
January	11 042	40 216	27 862	6 948	20 703	71 575	56 419	61 667	309 362
February	13 633	36 561	17 170	7 363	22 138	149 008	62 560	74 495	403 840
March	10 534	23 846	36 835	8 774	24 635	100 622	77 585	73 811	376 965
April	8 677	48 856	23 130	9 829	23 748	78 912	63 183	59 870	330 647
May	12 970	150	26 399	8 749	25 235	103 105	93 658	89 402	376 366
June	13 173	81 962	25 199	8 406	24 045	116 504	82 369	70 048	437 104
2000-01									
July	12 672	12 429	15 595	7 477	27 313	80 767	88 021	64 459	323 451
August	15 478	105 525	18 815	10 427	31 289	84 426	85 147	100 517	466 408
September	14 683	112 111	16 591	7 998	26 083	93 518	69 757	74 862	427 656

(a) Restrictions are placed on the release of statistics for certain commodities for reasons of confidentiality. These restrictions do not affect total export and import figures, but they can affect some items within commodity, industry and country tables. See *International Trade* (Cat. no. 5422.0), Explanatory Notes, paragraph 30, for more details.

Source: Unpublished data, *International Merchandise Trade*.

9

TURNOVER OF RETAIL ESTABLISHMENTS, BY INDUSTRY—SEASONALLY ADJUSTED(a)

Period	Food retailing	Department stores	Clothing and soft good retailing	Household good retailing	Recreational good retailing	Other retailing	Hospitality and services	Total
	\$m	\$m	\$m	\$m	\$m	\$m	\$m	\$m
1999-00								
July	376.2	90.2	51.8	87.7	30.1	86.1	146.2	868.3
August	382.9	93.7	53.9	89.8	30.2	90.4	142.1	883.1
September	379.7	92.9	53.4	91.8	32.9	88.9	149.5	889.0
October	378.8	92.7	53.0	93.1	29.2	89.7	159.7	896.2
November	381.6	94.5	52.9	94.2	32.4	93.8	154.7	904.0
December	378.1	90.9	53.9	87.9	33.7	94.1	150.2	888.8
January	368.1	92.0	48.1	92.7	28.0	91.2	164.8	885.0
February	375.8	90.4	48.7	91.0	29.3	93.3	160.2	888.8
March	383.1	93.1	46.8	96.5	30.3	93.7	157.3	900.7
April	392.7	93.3	46.2	92.8	26.9	90.4	146.7	889.1
May	397.4	94.7	50.1	98.6	26.0	91.4	148.1	906.3
June	392.1	110.6	57.0	115.5	26.3	94.1	151.5	947.1
2000-01								
July	378.3	75.7	41.5	91.7	26.5	96.0	159.3	869.1
August	387.7	94.3	46.1	99.2	26.3	102.7	170.3	926.6
September	383.8	95.3	50.7	97.6	25.2	106.4	166.0	925.0

(a) The retail trend series in current price terms has been replaced by seasonally adjusted data. For more information see Changes in this Issue or *Retail Trade, Australia, September 2000* (Cat. no. 8501.0).

Source: *Retail Trade, Australia* (Cat. no. 8501.0).

10

NEW MOTOR VEHICLE REGISTRATIONS, BY TYPE OF VEHICLE(a)

Period	Original			Seasonally adjusted			Trend estimate		
	Passenger vehicles	Other vehicles	Total	Passenger vehicles	Other vehicles	Total	Passenger vehicles	Other vehicles	Total
1999-00									
July	3 429	689	4 118	3 274	718	3 992	3 222	671	3 893
August	3 149	702	3 851	3 047	741	3 788	3 148	689	3 837
September	3 120	531	3 651	3 039	559	3 598	3 149	695	3 844
October	2 983	676	3 659	3 027	797	3 824	3 210	690	3 900
November	3 656	679	4 335	3 423	684	4 107	3 276	676	3 952
December	3 729	694	4 423	3 553	627	4 180	3 327	655	3 982
January	2 462	464	2 926	3 265	617	3 882	3 296	635	3 931
February	3 269	599	3 868	3 315	635	3 950	3 184	622	3 806
March	3 289	705	3 994	3 007	622	3 629	3 055	614	3 669
April	2 400	500	2 900	2 825	564	3 389	2 992	612	3 604
May	3 171	725	3 896	3 210	625	3 835	3 040	615	3 655
June	2 720	943	3 663	2 261	698	2 959	3 180	615	3 795
2000-01									
July	4 078	538	4 616	4 072	559	4 631	3 357	616	3 973
August	3 956	582	4 538	3 753	584	4 337	3 532	616	4 148
September	3 547	571	4 118	3 595	652	4 247	3 702	618	4 320

(a) Trend estimates for March 2000 to August 2000 have been revised. For more information see *New Motor Vehicle Registrations, Australia, Preliminary* (Cat. no. 9301.0).

Source: *New Motor Vehicle Registrations, Australia, Preliminary* (Cat. no. 9301.0) and unpublished data.

11

ACTUAL PRIVATE NEW CAPITAL EXPENDITURE, BY SELECTED INDUSTRY AND TYPE OF ASSET

Period	Industry			Total	Type of asset	
	Mining	Manufacturing	Other selected industries		New buildings and structures	Equipment, plant and machinery
ANNUAL (\$m)						
1997-98	1 366	820	1 006	3 192	792	2 400
1998-99	508	776	992	2 277	529	1 748
1999-00	242	854	1 358	2 455	619	1 836
QUARTERLY, ORIGINAL (\$m)						
1998-99						
March	98	187	220	505	97	407
June	136	188	180	504	103	401
1999-00						
September	71	163	391	625	125	500
December	50	232	249	530	117	413
March	55	208	341	603	157	446
June	67	252	378	696	220	476
QUARTERLY, TREND (\$m)						
1998-99						
March	n.a.	n.a.	n.a.	553	117	436
June	n.a.	n.a.	n.a.	549	107	442
1999-00						
September	n.a.	n.a.	n.a.	558	109	449
December	n.a.	n.a.	n.a.	585	134	451
March	n.a.	n.a.	n.a.	622	167	455
June	n.a.	n.a.	n.a.	650	196	454

Source: State Estimates of Private New Capital Expenditure (Cat. no. 5646.0).

12

TOURIST ACCOMMODATION

Period	Hotels with facilities				Motels and guesthouses				Serviced apartments			
	Estab-lish-ments	Guest rooms	Room occu-pancy	Takings	Estab-lish-ments	Guest rooms	Room occu-pancy	Takings	Estab-lish-ments	Guest rooms	Room occu-pancy	Takings
	no.	no.	%	\$'000	no.	no.	%	\$'000	no.	no.	%	\$'000
1997-98												
June	61	4 048	53.6	19 048	147	5 136	52.8	17 773	19	750	59.4	3 551
1998-99												
September	61	4 048	57.2	21 068	146	5 112	51.7	17 805	19	740	56.3	3 667
December	61	4 053	63.0	24 954	146	5 135	58.1	19 990	22	888	66.0	4 884
March	61	4 053	59.6	22 181	145	5 119	55.3	18 793	22	888	65.8	4 516
June	62	4 095	58.6	22 362	146	5 189	51.5	18 140	22	889	54.1	3 947
1999-00												
September	62	3 988	58.0	20 959	146	5 175	50.7	17 812	23	1 084	60.2	5 265
December	62	4 090	61.6	24 619	146	5 166	55.1	19 928	26	1 207	61.5	6 462
March	62	4 065	60.1	23 738	146	5 168	55.3	19 956	26	1 213	62.6	6 739
June	60	4 037	58.7	23 033	147	5 212	53.1	19 309	26	1 208	62.7	6 912

Source: Tourist Accommodation, Australia (Cat. no. 8635.0).

Period	Houses		Total dwelling units		New residential building \$m	Alterations and additions to residential building \$m	Total residential building \$m	Non-residential building \$m	Total building \$m
	Private sector	Total	Private sector	Total					
	no.	no.	no.	no.					
ANNUAL									
1997-98	6187	6380	6997	7215	630.2	127.7	758.0	602.2	1360.1
1998-99	6568	6777	7697	7928	775.6	144.0	919.6	670.9	1590.5
1999-00	8290	8392	9915	10024	1022.9	188.9	1211.8	585.7	1797.5
MONTHLY, ORIGINAL									
1999-00									
July	615	620	837	842	101.8	14.1	115.9	31.7	147.6
August	663	669	765	771	76.4	15.5	91.9	37.5	129.4
September	731	772	866	907	88.5	15.9	104.3	49.2	153.5
October	667	681	777	794	79.6	14.0	93.7	31.6	125.2
November	892	904	981	993	101.4	15.5	116.9	36.2	153.1
December	736	736	842	842	85.8	13.4	99.2	129.5	228.8
January	649	649	783	783	69.7	25.4	95.1	18.5	113.6
February	836	838	1071	1073	111.8	18.7	130.5	43.3	173.9
March	807	809	972	974	99.7	15.8	115.5	59.0	174.5
April	561	565	635	643	64.9	11.8	76.7	58.7	135.3
May	616	625	795	804	79.5	17.3	96.8	66.1	162.9
June	517	524	591	598	63.9	11.5	75.4	24.3	99.7
2000-01									
July	443	461	689	710	83.5	9.3	92.8	60.6	153.4
August	450	465	507	522	57.8	11.9	69.7	89.6	159.3
September	353	353	409	409	42.1	12.6	54.7	29.4	84.1
MONTHLY, TREND									
1999-00									
July	595	613	708	728	74.3	13.7	88.1	35.5	123.5
August	630	648	741	761	77.6	13.6	91.2	37.0	128.3
September	683	700	795	813	81.8	14.1	95.9	37.7	133.6
October	746	761	863	879	86.8	15.4	102.1	37.6	139.7
November	804	815	935	946	92.0	17.1	109.1	37.0	146.1
December	842	849	991	998	96.6	18.8	115.5	37.9	153.3
January	846	849	1011	1014	98.8	19.9	118.6	40.2	158.8
February	812	813	983	985	97.4	19.8	117.2	42.9	160.1
March	747	749	916	919	92.7	18.4	111.1	46.4	157.6
April	661	666	821	827	85.5	16.1	101.6	50.0	151.6
May	574	582	718	727	76.9	13.8	90.7	52.3	143.0
June	498	508	625	636	68.2	12.2	80.4	52.9	133.3
2000-01									
July	435	446	544	556	60.2	11.3	71.5	52.4	124.0
August	384	395	475	487	52.9	10.9	63.8	51.4	115.2
September	346	356	420	430	47.2	10.5	57.7	50.0	107.7

Source: Building Approvals, Australia (Cat. no. 8731.0); Unpublished data, Building Approvals.

14

BUILDING COMMENCEMENTS

Period	New houses		Total dwelling units(a)		New residential building \$m	Alterations and additions to residential building \$m	Non-residential building		
	Private sector	Total	Private sector	Total			Private sector	Total	Total building
	no.	no.	no.	no.			\$m	\$m	\$m
1997-98	5 628	5 823	6 437	6 653	614.7	134.5	426.4	550.7	1 299.9
1998-99	6 091	6 296	7 186	7 416	771.3	139.7	400.7	624.3	1 535.3
1999-00	7 703	7 830	9 341	9 485	1 041.1	202.8	344.8	569.9	1 813.7
1997-98									
June	1 334	1 397	1 490	1 558	152.9	30.4	134.5	169.1	352.4
1998-99									
September	1 563	1 610	1 927	1 980	184.7	35.0	89.5	131.1	350.7
December	1 644	1 699	1 891	1 965	231.1	34.3	94.6	134.8	400.2
March	1 293	1 326	1 612	1 645	171.6	32.7	145.6	235.5	439.8
June	1 591	1 661	1 756	1 826	183.9	37.8	71.0	122.9	344.6
1999-00									
September	1 752	1 792	2 116	2 166	251.2	42.6	84.1	109.3	403.1
December	1 947	2 007	2 264	2 327	250.9	45.2	92.7	132.2	428.3
March	2 054	2 064	2 534	2 544	284.9	52.1	70.8	182.9	519.9
June	1 950	1 967	2 427	2 448	254.1	62.9	97.3	145.5	462.5

(a) Includes conversions.

Source: Building Activity, Australia (Cat. no. 8752.0).

VALUE OF BUILDING WORK DONE AND COMPLETED DURING PERIOD

Period	New houses		New residential building			Non-residential building		Total building		
	Private sector	Total	Private sector	Total	Alterations and additions to residential building	Total residential building	Private sector	Total	Private sector	Total
	\$m	\$m	\$m	\$m	\$m	\$m	\$m	\$m	\$m	\$m
VALUE OF BUILDING WORK DONE										
1997-98	522.9	535.7	590.4	605.4	131.6	737.0	538.9	685.0	1 259.3	1 422.0
1998-99	599.4	614.6	720.8	737.7	147.7	885.4	417.1	571.6	1 283.8	1 457.0
1999-00	795.8	809.9	980.9	996.4	195.9	1 192.3	404.8	621.5	1 576.9	1 813.8
1997-98										
June	135.9	139.4	154.5	158.5	31.2	189.7	112.3	151.5	297.9	341.1
1998-99										
September	150.9	155.8	175.8	180.9	39.8	220.7	135.5	162.9	350.5	383.6
December	151.4	155.1	185.6	189.9	40.3	230.1	121.5	160.4	347.0	390.6
March	142.4	144.9	169.5	172.5	33.2	205.7	87.5	131.1	290.1	336.8
June	154.7	158.9	189.9	194.4	34.4	228.9	72.6	117.2	296.2	346.1
1999-00										
September	166.8	171.9	212.6	218.4	41.3	259.8	116.7	171.5	369.4	431.3
December	187.5	192.0	227.3	232.1	46.8	278.9	101.0	149.2	374.3	428.1
March	193.0	196.1	239.4	242.6	47.2	289.9	86.3	145.3	372.4	435.2
June	248.5	249.9	301.6	303.3	60.5	363.8	100.8	155.4	460.9	519.2
VALUE OF BUILDING WORK COMPLETED										
1997-98	504.1	514.7	561.8	574.7	125.0	699.7	571.2	744.0	1 256.3	1 443.7
1998-99	600.6	614.8	700.0	715.2	153.2	868.4	505.3	639.4	1 356.8	1 507.8
1999-00	709.3	726.0	863.0	881.6	191.4	1 073.1	360.4	533.4	1 411.8	1 606.5
1997-98										
June	125.3	128.1	136.0	139.8	24.6	164.4	110.1	148.0	270.6	312.5
1998-99										
September	148.1	152.4	161.1	165.8	36.1	201.9	68.2	106.7	264.9	308.6
December	168.4	174.1	190.2	196.1	49.3	245.4	174.9	203.3	414.1	448.7
March	145.1	147.6	180.1	183.0	36.7	219.7	161.3	207.4	377.8	427.1
June	139.0	140.7	168.6	170.3	31.0	201.4	101.0	122.0	300.0	323.3
1999-00										
September	148.9	154.7	170.2	177.7	38.5	216.2	67.9	104.1	275.4	320.2
December	190.6	195.1	221.7	226.5	45.5	272.0	124.7	161.8	391.3	433.8
March	156.0	160.2	177.8	182.0	42.2	224.2	100.8	150.4	320.0	374.6
June	213.7	215.9	293.3	295.5	65.2	360.8	67.0	117.1	425.2	477.9

Source: Building Activity, Australia (Cat. no. 8752.0).

<i>Period</i>	<i>Pigmeat</i>	<i>Beef</i>	<i>Mutton</i>	<i>Lamb</i>	<i>Gas</i>	<i>Coal(a)</i>	<i>Sawn timber(b)</i>
	<i>tonnes</i>	<i>tonnes</i>	<i>tonnes</i>	<i>tonnes</i>	<i>m MJ</i>	<i>tonnes</i>	<i>m³</i>
1997-98	28 489	80 924	58 554	38 224	78 441	2 815 870	361 257
1998-99	30 864	62 266	48 029	44 173	86 228	2 686 069	374 590
1999-00	31 927	78 001	28 970	56 668	87 442	2 920 944	425 549
1998-99							
September	6 782	15 160	10 348	10 738	23 573	748 575	95 339
December	7 269	17 609	15 737	10 997	19 718	671 040	94 578
March	8 031	14 780	14 029	10 101	19 343	826 095	88 282
June	8 782	14 717	7 915	12 337	23 594	440 359	96 391
1999-00							
September	7 294	17 107	5 654	11 492	22 162	783 227	111 075
December	7 504	18 401	8 714	11 944	20 992	684 296	93 802
March	8 245	21 743	8 810	14 475	21 790	747 472	112 949
June	8 884	20 750	5 792	18 757	22 498	705 949	107 723
2000-01							
September	8 227	18 011	8 072	15 785	24 437	907 743	126 440

(a) Data supplied by Flinders Power Pty Ltd.

(b) From Australian softwood logs only.

Source: *Livestock Products, Australia* (Cat. no. 7215.0); *Unpublished data, Manufacturing Production*.

17

CONSUMER PRICE INDEX, BY GROUP—ADELAIDE(a)

Period	Food	Alcohol and tobacco	Clothing and footwear(b)	Housing (c)	House furnishings, supplies and services(c)	Health (d)	Transportation(c)	Communication(b)	Recreation(d)	Education(c)	Miscellaneous(d)	All groups
ANNUAL AVERAGE (1989–90 = 100.0)												
1997–98	n.a.	n.a.	n.a.	n.a.	n.a.	n.a.	n.a.	n.a.	n.a.	n.a.	n.a.	121.6
1998–99	127.7	171.8	105.0	92.0	113.3	176.0	121.6	101.9	117.9	204.8	142.7	123.2
1999–00	130.8	179.1	103.3	97.0	112.9	165.7	129.4	97.7	119.1	215.8	148.8	126.3
QUARTERLY (1989–90 = 100.0)												
1998–99												
June	128.8	173.3	105.7	92.8	113.2	164.5	122.4	100.0	118.9	210.8	142.6	123.6
1999–00												
September	129.7	174.4	104.8	95.0	112.5	164.5	127.8	97.7	119.7	210.8	143.2	125.1
December	130.4	177.8	102.5	96.9	112.7	163.7	127.4	97.2	119.7	210.8	147.4	125.7
March	131.2	181.6	101.9	97.9	112.9	166.7	130.4	97.0	118.5	220.7	150.6	126.8
June	131.9	182.5	104.0	98.3	113.4	167.9	131.9	98.7	118.6	220.7	153.9	127.6
2000–01												
September	133.8	193.4	113.6	103.9	116.0	168.5	136.8	105.5	122.7	220.9	157.8	132.3
PERCENTAGE CHANGE FROM SAME QUARTER OF PREVIOUS YEAR												
1998–99												
June	n.a.	n.a.	n.a.	n.a.	n.a.	n.a.	n.a.	n.a.	n.a.	n.a.	n.a.	n.a.
1999–00												
September	3.0	2.2	-0.5	4.2	-1.1	-12.6	4.6	-6.1	2.6	6.0	1.0	1.7
December	1.7	3.7	-2.8	5.4	-1.1	-12.6	5.0	-5.9	2.0	6.0	2.8	1.7
March	2.5	5.7	-1.7	6.2	0.5	1.7	7.9	-3.2	-0.1	4.7	5.2	3.3
June	2.4	5.3	-1.6	5.9	0.2	2.1	7.8	-1.3	-0.3	4.7	7.9	3.2
2000–01												
September	3.2	10.9	8.4	9.4	3.1	2.4	7.4	8.0	2.5	4.8	10.2	5.8
PERCENTAGE CHANGE FROM PREVIOUS QUARTER												
1998–99												
June	n.a.	n.a.	n.a.	n.a.	n.a.	n.a.	n.a.	n.a.	n.a.	n.a.	n.a.	n.a.
1999–00												
September	0.7	0.6	-0.9	2.4	-0.6	0.0	4.1	-2.3	0.7	0.0	0.4	1.2
December	0.5	1.9	-2.2	2.0	0.2	-0.5	-0.3	-0.5	0.0	0.0	2.9	0.5
March	0.6	2.1	-0.6	1.0	0.2	1.8	2.4	-0.2	-1.0	4.7	2.2	0.9
June	0.5	0.5	2.1	0.4	0.4	0.7	1.2	1.8	0.1	0.0	2.2	0.6
2000–01												
September	1.4	6.0	9.2	5.7	2.3	0.4	3.7	6.9	3.5	0.1	2.5	3.7

(a) The 14th Series CPI commenced September quarter 2000. For more information see *Consumer Price Index, Australia, September Quarter 2000* (Cat. no. 6401.0)

(b) Series renamed only (linked to the 13th series equivalent). See Appendix A2 of *Consumer Price Index, Australia* (Cat. no. 6401.0) for more details.

(c) Minor change to composition and in some cases series renamed (linked to the 13th series equivalent). See Appendix A2 of *Consumer Price Index, Australia* (Cat. no. 6401.0) for more details.

(d) New series, part or combination of previously published series. See Appendix A2 of *Consumer Price Index, Australia* (Cat. no. 6401.0) for more details.

Source: *Consumer Price Index* (Cat. no. 6401.0).

18

ESTIMATED RESIDENT POPULATION AND COMPONENTS OF POPULATION CHANGE

Period	Net migration			Total increase	Population at end of period
	Natural increase	Interstate	Overseas(a)		
1996-97	6 951	-4 628	3 104	5 427	1 479 680
1997-98	6 602	-3 254	3 390	7 638	1 486 418
1998-99	6 593	-2 869	2 932	6 656	1 493 074
1997-98					
March	2 074	-519	1 291	2 774	1 485 206
June	1 471	-810	551	1 212	1 486 418
1998-99					
September	1 188	-422	778	1 544	1 487 661
December	1 775	-901	707	1 581	1 489 906
March	1 917	-682	1 149	2 384	1 491 391
June	1 713	-864	298	1 147	1 492 408
1999-00					
September	1 515	-600	784	1 699	1 494 107
December	1 540	-1 291	808	1 057	1 495 164
March	1 998	-1 735	662	925	1 496 089

(a) Includes category jumping.

Source: Australian Demographic Statistics (Cat. no. 3101.0).

19

BIRTHS, DEATHS, MARRIAGES AND DIVORCES

Period	Registrations			
	Births	Deaths	Marriages	Divorces
1996-97	18 576	11 625	8 003	4 362
1997-98	18 330	11 728	7 988	4 113
1998-99	18 277	11 684	8 033	4 201
1997-98				
March	4 599	2 525	2 405	1 016
June	4 479	3 008	1 824	1 005
1998-99				
September	4 722	3 443	1 294	1 053
December	4 524	2 804	2 499	1 085
March	4 594	2 494	2 472	919
June	4 559	2 907	1 769	1 134
1999-00				
September	4 722	3 207	1 259	1 058
December	4 139	2 599	2 737	1 190
March	4 759	2 761	2 436	965

Source: Australian Demographic Statistics (Cat. no. 3101.0).

Period	Employed full-time		Employed part-time		Total employed		Unemployed		Labour force	
	Males	Females	Males	Females	Males	Females	Males	Females	Males	Females
ANNUAL AVERAGE ('000)										
1997-98	317.5	145.9	48.8	136.4	366.3	282.3	42.1	28.8	408.4	311.0
1998-99	319.4	148.1	49.2	136.2	368.6	284.3	40.2	26.6	408.8	310.9
1999-00	321.9	152.4	55.9	141.4	377.8	293.9	35.3	25.0	413.0	318.9
MONTHLY, ORIGINAL ('000)										
1999-00										
August	315.4	151.1	56.0	137.4	371.3	288.5	36.5	24.5	407.9	313.0
September	317.6	150.9	56.6	144.0	374.2	294.9	34.1	26.4	408.3	321.3
October	313.7	153.7	59.4	138.8	373.1	292.5	37.4	25.0	410.5	317.5
November	317.5	153.7	55.0	146.7	372.5	300.4	34.4	21.5	406.8	321.9
December	326.8	160.3	59.7	145.3	386.6	305.6	35.0	24.2	421.6	329.8
January	317.4	147.6	56.7	144.4	374.1	292.1	36.8	24.9	410.9	317.0
February	328.4	154.9	52.6	136.7	381.0	291.5	38.1	30.4	419.2	322.0
March	327.6	152.5	55.8	141.7	383.4	294.2	33.0	26.8	416.3	321.0
April	325.6	149.9	56.9	143.9	382.5	293.9	35.2	25.4	417.7	319.3
May	323.3	148.0	55.8	142.8	379.1	290.9	38.3	24.9	417.4	315.8
June	328.9	154.6	52.1	137.6	380.9	292.2	33.5	22.3	414.5	314.6
2000-01										
July	332.2	155.9	52.2	140.8	384.4	296.7	31.3	22.3	415.7	319.0
August	327.7	158.2	54.5	138.4	382.2	296.6	31.9	22.9	414.1	319.5
September	329.1	162.1	53.2	139.8	382.4	301.9	33.8	22.4	416.2	324.3
October	327.7	157.4	54.4	142.0	382.1	299.3	31.7	19.7	413.8	319.1
MONTHLY, TREND ('000)										
1999-00										
August	316.8	152.3	56.5	138.6	373.3	290.9	34.7	25.7	408.0	316.6
September	315.8	152.6	57.7	140.2	373.5	292.8	34.9	25.3	408.4	318.1
October	315.8	152.8	58.3	142.1	374.1	294.9	35.1	24.9	409.2	319.8
November	316.9	152.9	58.5	143.5	375.4	296.4	35.0	24.6	410.4	321.0
December	319.2	152.6	58.1	144.6	377.3	297.2	34.8	24.6	412.1	321.8
January	322.1	152.1	57.1	144.7	379.2	296.8	34.7	24.9	413.9	321.7
February	325.0	151.5	55.7	144.1	380.7	295.6	35.0	25.1	415.7	320.7
March	327.2	151.3	54.5	142.7	381.7	294.0	35.4	25.3	417.1	319.3
April	328.7	151.7	53.5	141.3	382.2	293.0	35.8	25.3	418.0	318.3
May	329.2	153.1	53.1	140.1	382.3	293.2	35.9	24.9	418.2	318.1
June	329.1	154.9	53.2	139.6	382.3	294.5	35.4	24.2	417.7	318.7
2000-01										
July	328.9	156.7	53.5	139.4	382.4	296.1	34.5	23.5	416.9	319.6
August	328.8	158.4	53.7	139.1	382.5	297.5	33.5	22.8	416.0	320.3
September	328.7	159.6	53.9	138.9	382.6	298.5	32.7	22.2	415.3	320.7
October	328.6	160.6	54.1	138.8	382.7	299.4	31.7	21.6	414.4	321.0

(a) Population aged 15 and over.

Source: Labour Force, Australia, Preliminary (Cat. no. 6202.0).

21

CIVILIAN LABOUR FORCE, UNEMPLOYMENT AND PARTICIPATION RATES(a)

Period	Civilian population			Unemployment rate			Participation rate		
	Males aged 15 and over	Females aged 15 and over	Persons aged 15-19	Males aged 15 and over	Females aged 15 and over	Persons aged 15 and over	Males	Females	Persons
	'000	'000	%	%	%	%	%	%	%
ANNUAL AVERAGE									
1997-98	583.9	604.5	23.2	10.3	9.2	9.8	70.8	51.5	61.0
1998-99	583.2	609.8	21.7	9.8	8.6	9.3	70.1	51.0	60.3
1999-00	636.8	665.1	22.1	9.2	8.4	8.9	76.2	56.3	65.0
MONTHLY, ORIGINAL									
1999-00									
August	586.0	612.6	22.1	9.0	7.8	8.5	69.6	51.1	60.1
September	586.4	613.0	20.6	8.4	8.2	8.3	69.6	52.4	60.8
October	586.8	613.3	21.1	9.1	7.9	8.6	70.0	51.8	60.7
November	587.1	613.6	22.1	8.5	6.7	7.7	69.3	52.5	60.7
December	587.5	613.8	20.0	8.3	7.3	7.9	71.8	53.7	62.5
January	587.8	614.0	21.8	9.0	7.8	8.5	69.9	51.6	60.6
February	588.1	614.2	23.3	9.1	9.5	9.3	71.3	52.4	61.6
March	588.4	614.4	22.0	7.9	8.4	8.1	70.8	52.3	61.3
April	588.8	614.7	19.3	8.4	8.0	8.2	70.9	51.9	61.2
May	589.2	614.9	19.4	9.2	7.9	8.6	70.8	51.4	60.9
June	589.6	615.2	17.5	8.1	7.1	7.7	70.3	51.1	60.5
2000-01									
July	590.0	615.5	15.1	7.5	7.0	7.3	70.5	51.8	61.0
August	590.4	615.8	20.5	7.7	7.2	7.5	70.1	51.9	60.8
September	590.7	616.0	17.6	8.1	6.9	7.6	70.4	52.6	61.4
October	591.0	616.3	16.9	7.7	6.2	7.0	70.0	51.8	60.7
MONTHLY, TREND									
1999-00									
August	n.a.	n.a.	n.a.	8.5	8.1	8.3	69.6	51.7	60.4
September	n.a.	n.a.	n.a.	8.5	8.0	8.3	69.7	51.9	60.6
October	n.a.	n.a.	n.a.	8.6	7.8	8.2	69.7	52.1	60.7
November	n.a.	n.a.	n.a.	8.5	7.7	8.1	69.9	52.3	60.9
December	n.a.	n.a.	n.a.	8.4	7.7	8.1	70.1	52.4	61.1
January	n.a.	n.a.	n.a.	8.4	7.7	8.1	70.4	52.4	61.2
February	n.a.	n.a.	n.a.	8.4	7.8	8.2	70.7	52.2	61.2
March	n.a.	n.a.	n.a.	8.5	7.9	8.2	70.9	52.0	61.2
April	n.a.	n.a.	n.a.	8.6	7.9	8.3	71.0	51.8	61.2
May	n.a.	n.a.	n.a.	8.6	7.8	8.2	71.0	51.7	61.1
June	n.a.	n.a.	n.a.	8.5	7.6	8.1	70.8	51.8	61.1
2000-01									
July	n.a.	n.a.	n.a.	8.3	7.4	7.9	70.7	51.9	61.1
August	n.a.	n.a.	n.a.	8.1	7.1	7.7	70.5	52.0	61.0
September	n.a.	n.a.	n.a.	7.9	6.9	7.5	70.3	52.1	61.0
October	n.a.	n.a.	n.a.	7.7	6.7	7.2	70.1	52.1	60.9

(a) Population aged 15 and over.

Source: Labour Force, Australia, Preliminary (Cat. no. 6202.0).

AVERAGE WEEKLY EARNINGS OF EMPLOYEES

Period	Males			Females			Persons		
	Full-time adult ordinary time earnings	Full-time adult total earnings	All males total earnings	Full-time adult ordinary time earnings	Full-time adult total earnings	All females total earnings	Full-time adult ordinary time earnings	Full-time adult total earnings	All employees total earnings
ANNUAL AVERAGE (\$ per week)									
1997-98	705.60	755.05	646.28	606.05	619.33	438.50	670.53	707.20	545.70
1998-99	741.20	797.55	678.28	627.93	647.28	464.35	699.13	741.70	575.23
1999-00	756.75	812.53	695.00	641.65	663.28	457.23	714.38	757.50	575.90
QUARTERLY, ORIGINAL (\$ per week)									
1998-99									
May	742.20	796.80	686.30	624.70	648.00	457.30	699.70	742.90	576.10
1999-00									
August	742.70	792.00	669.30	631.20	655.70	451.20	702.00	742.20	560.40
November	745.30	805.60	697.40	638.70	663.40	453.80	705.70	752.70	572.80
February	768.60	821.20	708.30	645.30	656.80	461.30	723.00	760.30	584.50
May	770.40	831.30	705.00	651.40	677.20	462.60	726.80	774.80	585.90
2000-01									
August	791.60	846.00	724.80	667.70	692.60	484.00	745.50	788.90	603.60
QUARTERLY, TREND (\$ per week)									
1998-99									
May	740.70	796.50	677.30	629.00	653.20	458.10	699.90	743.80	570.10
1999-00									
August	742.70	796.50	694.00	632.00	655.70	453.80	702.10	744.80	569.00
November	750.50	804.50	693.10	636.80	657.40	453.50	708.50	750.50	572.60
February	762.30	818.00	702.30	644.30	663.60	458.90	718.80	761.20	580.10
May	775.30	833.60	711.10	654.40	676.10	468.00	743.50	790.90	599.70
2000-01									
August	787.30	848.10	719.00	667.00	693.40	479.30	743.50	790.90	599.70

Source: Average Weekly Earnings, States and Australia (Cat. no. 6302.0).

23

SECURED HOUSING FINANCE COMMITMENTS(a)

Period	Original		Seasonally adjusted		Trend	
	Dwelling units	Value	Dwelling units	Value	Dwelling units	Value
	no.	\$m	no.	\$m	no.	\$m
1999-00						
July	3 397	319	3 502	332	3 474	335
August	3 419	331	3 561	349	3 616	352
September	3 545	349	3 573	354	3 753	367
October	3 708	370	4 106	407	3 863	379
November	4 310	422	4 038	393	3 916	385
December	3 924	390	3 786	363	3 911	385
January	3 154	313	3 806	381	3 846	380
February	3 976	398	3 904	392	3 731	370
March	4 236	417	3 572	350	3 609	360
April	3 099	309	3 368	334	3 534	353
May	4 003	401	3 713	373	3 529	351
June	3 510	354	3 204	331	3 577	352
2000-01						
July	3 460	324	3 655	344	3 664	356
August	4 025	377	4 055	386	3 765	361
September	3 645	343	3 925	368	3 881	368

(a) Excludes alterations and additions. Includes refinancing.

Source: *Housing Finance for Owner Occupation, Australia (Cat. no. 5609.0)*.

24

FINANCE COMMITMENTS

Period	Commercial finance commitments			Personal finance commitments			Total lease finance commitments
	Fixed loan facilities	Revolving credit facilities	Total commercial finance commitments	Fixed loan facilities	Revolving credit facilities	Total personal finance commitments	
	\$m	\$m	\$m	\$m	\$m	\$m	
1999-00							
July	253.4	261.8	515.2	122.6	132.1	254.7	23.4
August	412.9	255.3	668.3	124.3	127.6	251.9	26.6
September	265.9	206.5	472.4	126.6	140.0	266.6	19.8
October	325.5	209.8	535.3	125.0	128.0	253.0	14.7
November	289.4	221.8	511.2	128.9	151.3	280.2	12.7
December	380.7	296.0	676.8	124.7	143.8	268.5	13.4
January	272.3	134.8	407.1	122.6	94.8	217.4	10.2
February	301.4	201.0	502.4	138.4	120.8	259.2	18.0
March	403.7	240.8	644.5	155.3	159.3	314.7	12.3
April	370.5	176.4	546.9	108.2	135.6	243.7	17.7
May	309.5	249.9	559.4	139.5	156.1	295.6	16.7
June	758.9	392.6	1 151.4	154.0	147.9	301.9	18.4
2000-01							
July	337.0	256.5	593.5	112.8	147.0	259.8	9.8
August	248.0	163.0	411.0	141.9	155.3	297.2	10.1
September	234.0	269.6	503.6	131.6	99.7	231.3	15.8

Source: *Unpublished data, PC Ausstats*.

PUBLICATIONS SOURCE INDEX

- (1) *Australian National Accounts, Quarterly State Details*
(Cat. no. 5206.0.40.001)
- (2) *International Merchandise Trade, Australia*
(Cat. no. 5422.0) Quarterly
- (3) *Retail Trade, Australia* (Cat. no. 8501.0) Monthly
- (4) *New Motor Vehicles Registrations, Australia, Preliminary*
(Cat. no. 9301.0) Monthly
- (5) *State Estimates of Private New Capital Expenditure*
(Cat. no. 5646.0) Quarterly
- (6) *Tourist Accommodation, Australia* (Cat. no. 8635.0) Quarterly
- (7) *Building Approvals, Australia* (Cat. no. 8731.0) Monthly
- (8) *Building Activity, Australia* (Cat. no. 8752.0) Quarterly
- (8a) *Building Activity, Australia, Dwelling Unit Commencements, Preliminary* (Cat. no. 8750.0) Quarterly
- (9) *Engineering Construction Activity, Australia*
(Cat. no. 8762.0) Quarterly
- (10) *Manufacturing Production, Australia, Preliminary*
(Cat. no. 8301.0) Quarterly
- (11) *Livestock Products, Australia* (Cat. no. 7215.0) Quarterly
- (12) *Actual and Expected Private Mineral Exploration, Australia*
(Cat. no. 8412.0) Quarterly
- (13) *Consumer Price Index* (Cat. no. 6401.0) Quarterly
- (14) *Price Index of Materials Used in House Building, Six State Capital Cities and Canberra* (Cat. no. 6408.0) Quarterly
- (15) *Price Index of Materials Used in Building Other Than House Building, Six State Capital Cities and Canberra*
(Cat. no. 6407.0) Quarterly
- (16) *House Price Indexes: Eight Capital Cities*
(Cat. no. 6416.0) Quarterly
- (17) *Australian Demographic Statistics* (Cat. no. 3101.0) Quarterly
- (18) *Labour Force, Australia, Preliminary* (Cat. no. 6202.0) Monthly
- (19) *Job Vacancies, Australia* (Cat. no. 6354.0) Quarterly
- (20) *Industrial Disputes, Australia* (Cat. no. 6321.0) Monthly
- (21) Unpublished overseas arrival and departure statistics
- (22) *Average Weekly Earnings, States and Australia*
(Cat. no. 6302.0) Quarterly
- (23) *Wage Cost Index, Australia* (Cat. no. 6345.0) Quarterly
- (24) *Housing Finance for Owner Occupation, Australia*
(Cat. no. 5609.0) Monthly
- (25) Unpublished statistics available from PC AUSSTATS
- (26) *Reserve Bank of Australia Bulletin*

FOR MORE INFORMATION...

- INTERNET* **www.abs.gov.au** the ABS web site is the best place to start for access to summary data from our latest publications, information about the ABS, advice about upcoming releases, our catalogue, and Australia Now—a statistical profile.
- LIBRARY* A range of ABS publications is available from public and tertiary libraries Australia-wide. Contact your nearest library to determine whether it has the ABS statistics you require, or visit our web site for a list of libraries.
- CPI INFOLINE* For current and historical Consumer Price Index data, call 1902 981 074 (call cost 77c per minute).
- DIAL-A-STATISTIC* For the latest figures for National Accounts, Balance of Payments, Labour Force, Average Weekly Earnings, Estimated Resident Population and the Consumer Price Index call 1900 986 400 (call cost 77c per minute).

INFORMATION SERVICE

Data which have been published and can be provided within five minutes are free of charge. Our information consultants can also help you to access the full range of ABS information—ABS user-pays services can be tailored to your needs, time frame and budget. Publications may be purchased. Specialists are on hand to help you with analytical or methodological advice.

- PHONE* **1300 135 070**
- EMAIL* **client.services@abs.gov.au**
- FAX* 1300 135 211
- POST* Client Services, ABS, GPO Box 796, Sydney 1041

WHY NOT SUBSCRIBE?

ABS subscription services provide regular, convenient and prompt deliveries of ABS publications and products as they are released. Email delivery of monthly and quarterly publications is available.

- PHONE* 1300 366 323
- EMAIL* subscriptions@abs.gov.au
- FAX* 03 9615 7848
- POST* Subscription Services, ABS, GPO Box 2796Y, Melbourne 3001



2130740012006
ISSN 1039-8880

RRP \$18.50